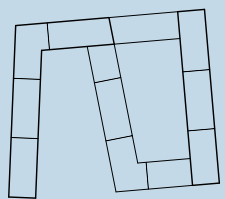
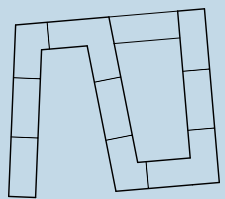


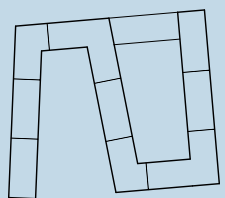
6. OG



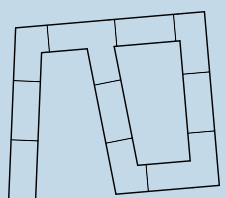
5. OG



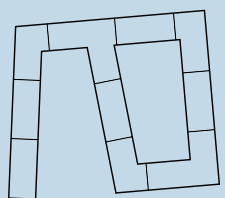
4. OG



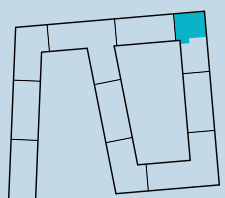
3. OG



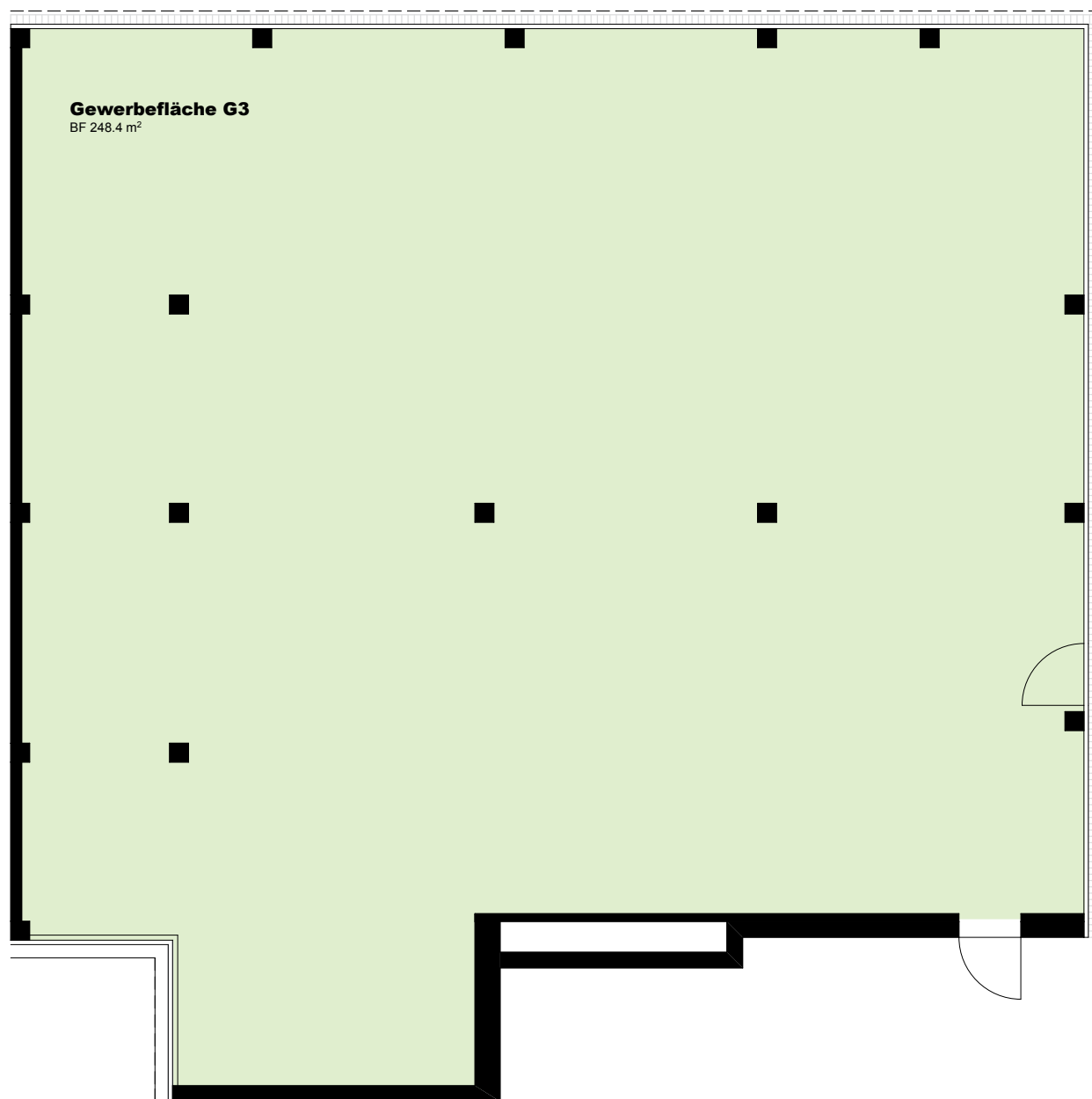
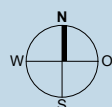
2. OG



1. OG



EG



Gewerbefläche, Typ Ursa Minor

Nettonutzfläche	ca. 248.4 m ²		
Erdgeschoss T6-G3	Nettomiete CHF 4'705.-	NK CHF 540.-	Bruttomiete CHF 5'245.-

